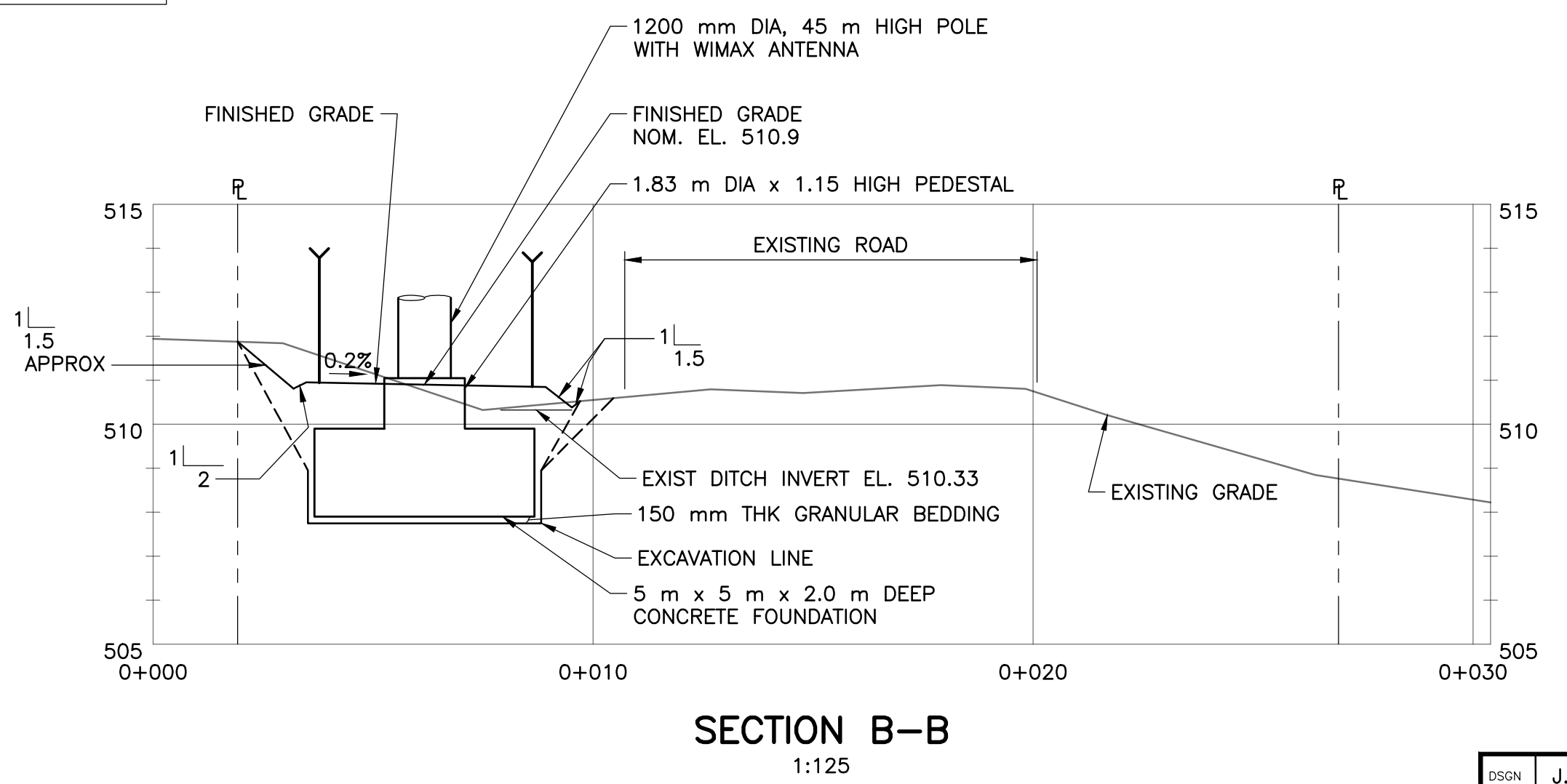


PLAN
SCALE: 1:250



SECTION B-B
1:125

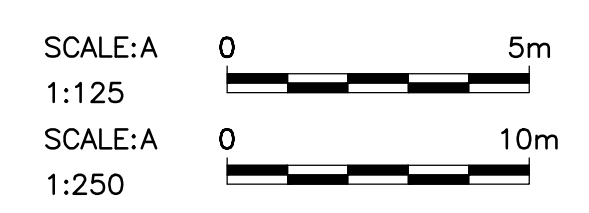
NOTES:

- FOR GENERAL NOTES AND STANDARD DETAILS, SEE DRAWING 525-C01-00013.
- REFER TO SPECIFICATIONS, DETAILS AND PARTICULARS FOR POLES, PULLBOXES, CONDUITS, CONDUCTOR, CABLES AND WIRING ALL PROVIDED BY BC HYDRO.
- FINISHED GRADE SLOPE SHALL BE $\geq 2H:1V$. HYDRO-SEED ALL EXPOSED SOIL SURFACES WITH MOTI SNOWY-WINTER SEED MIX.
- CONDUIT REQUIREMENTS:

DESCRIPTION	CONDUIT REQUIREMENTS (TYPE x NUMBER)
BUILDING TO MONOPOLE	7 CONDUITS (4 FIBRE, 3 DC POWER)
CONDUIT TYPE C: COMMUNICATIONS CONDUIT I: INSTRUMENTATION CONDUIT L: LIGHTING (STROBE) CONDUIT	

LEGEND:

- +xxx.xxx SPOT ELEVATION
- xx DESCRIPTOR
- 914*OIP OLD IRON PIN FOUND
- E NEW SIREN, INSTRUMENTATION, LIGHTING AND / OR COMMUNICATION CABLES
- O/H NEW OVERHEAD CABLES
- O/H EXISTING TRANSMISSION LINE
- NEW FENCE
- D NEW DITCH
- D EXISTING DITCH
- SW NEW SWALE
- NEW CULVERT
- EXISTING CULVERT
- O_{PB} NEW ELECTRICAL PULLBOX
- O NEW POLE
- O EXISTING POLE



Ausenco
PROJECT NUMBER 302029-05

BC Hydro

**PUNTLEDGE RIVER
PUBLIC WARNING SYSTEM
FORBIDDEN PLATEAU
SITE PLAN (ELEVATION 510 m)**

DSGN	J. KARLSSON
INDEP CHK	F. SIDDIQUI
DFTG	T. CHI
DFTG CHK	J. KARLSSON
INSP	-
REV	-
ACPT	-

THIS DRAWING WAS PREVIOUSLY DWG. NO. 302029-0000-B-061

REF#	DRAWING NUMBER	TITLE	NO	REMARKS	DATE	DESIGNED	INDEP CHK	DRFT	DRFT CHK	INSP	REV	ACPT	NO	REMARKS	DATE	DESIGNED	INDEP CHK	DRFT	DRFT CHK	INSP	REV	ACPT	
		REFERENCE DRAWINGS																					
		REVISIONS																					

S:\proj\302029-05\CAD\0000\1\dwg\504Q-C08-00001.dwg
TONY CHI
6/23/2016 6:50 PM